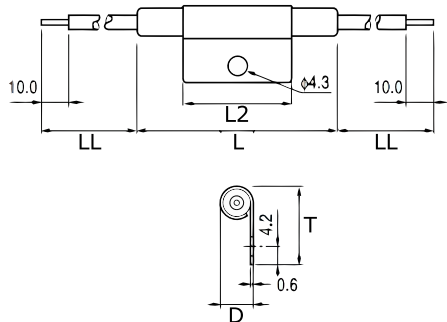


KEMET Part Number: TRS5-90BLR00V
(USEF90BLR00000)

KEMET

a YAGEO company

KEMET, TRS, Thermal Reed Switch, Axial, 2.5C Temperature Accuracy, High Reliability, High-Speed Response, Long Operational Life, Excellent Environmental Durability, High Temperature Accuracy, 90°C, Break



Dimensions	
D	7.7mm NOM
L	47mm NOM
L2	27mm
T	18.8mm
LL	200mm NOM

Packaging Specifications	
Packaging:	Rubberband Box
Packaging Quantity:	500
Component Weight:	7.3 g

General Information	
Series:	TRS
Type:	Thermal Reed Switch
Style:	Axial
Description:	Thermal Reed Switch
Features:	High Reliability, High-Speed Response, Long Operational Life, Excellent Environmental Durability, High Temperature Accuracy
Lead:	Cables
RoHS:	Yes

Specifications	
Switching Temperature:	90C +/-2.5C
Temperature Range:	-20/+130°C
Contact Type:	Break
Voltage AC:	264 VAC MAX (Opening/Closing)
Current:	0.275 Amps AC MAX (Opening/Closing), 1 mAmps MIN (5VDC, Opening/Closing)
Resistance:	150 mOhms MAX (Contact Resistance)
Max Opening/Closing Power:	60.5 W (AC/DC)
Max Opening/Closing Voltage:	264 V (AC)
Differential Temperature:	10C Maximum

Statements of suitability for certain applications are based on our knowledge of typical operating conditions for such applications, but are not intended to constitute - and we specifically disclaim - any warranty concerning suitability for a specific customer application or use. This Information is intended for use only by customers who have the requisite experience and capability to determine the correct products for their application. Any technical advice inferred from this Information or otherwise provided by us with reference to the use of our products is given gratis, and we assume no obligation or liability for the advice given or results obtained.

KEMET

a YAGEO company