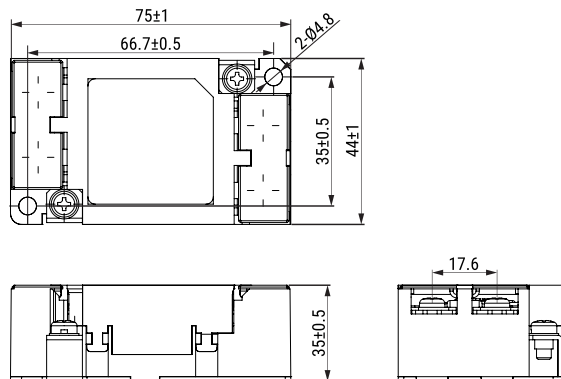


KEMET, GTX, EMI/RFI Filters, Noise Suppression, 250 VAC, 560 VDC, 30 A, 75x44x25mm



Dimensions

L	75mm +/-1mm
W	44mm +/-1mm
H	25mm +/-1mm
S	17.6mm NOM
L1	66.7mm +/-0.5mm
W1	35mm +/-0.5mm

Packaging Specifications

Packaging Quantity:	30
Weight:	128 g

General Information

Series:	GTX
Style:	Plastic Box
Description:	EMI Filter, With Y Capacitor
Phase:	Single-phase
RoHS:	With Exemptions
REACH:	SVHC (Pb – CAS 7439-92-1)
Qualifications:	UL, cUL, TUV
Tightening Torque:	1.2 ~ 1.4N-m (Recommended)
Line Terminal:	14-4(JST)
Line Terminal Width:	12 Max.
Earth Terminal:	R5.5-4(JST)
Earth Terminal Width:	9.5 Max.
Miscellaneous:	60 K Self-Temperature Rise Max.
Terminal Type:	Screw

Specifications

Voltage AC:	250 VAC
Voltage DC:	560 VDC
Voltage:	560 VDC
Rated Current:	30 A
Ripple Current:	30 A
Temperature Range:	-25/+55°C
Leakage Current:	0.5 mA (MAX)