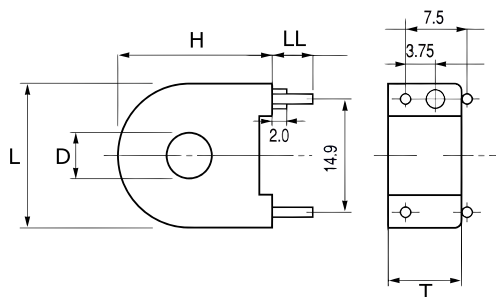


**KEMET Part Number: CT-07-50**  
(USEN0750000000)

KEMET, CT, Current, Round - Toroidal, AC, Overcurrent/Current Detection, High Sensitivity, High Performance



General Information	
<b>Series:</b>	CT
<b>Type:</b>	Current
<b>Style:</b>	Round - Toroidal
<b>Description:</b>	Low Alternating Current Sensor
<b>Features:</b>	Overcurrent/Current Detection, High Sensitivity, High Performance
<b>Lead:</b>	4 Wire Leads
<b>RoHS:</b>	Yes
<b>Notes:</b>	0.8 mm Diameter Pin Connectors

Dimensions	
<b>D</b>	5.9mm NOM
<b>L</b>	19mm NOM
<b>H</b>	20.2mm NOM
<b>T</b>	10mm MAX
<b>LL</b>	5.5mm +/-0.5mm

Specifications	
<b>Temperature Range:</b>	-20/+80°C
<b>Miscellaneous:</b>	Materials = Phenolic Resin Case, Epoxy-Filled. 500 turns.

Packaging Specifications	
<b>Packaging:</b>	Tray
<b>Packaging Quantity:</b>	1200
<b>Weight:</b>	5.4 g

Statements of suitability for certain applications are based on our knowledge of typical operating conditions for such applications, but are not intended to constitute - and we specifically disclaim - any warranty concerning suitability for a specific customer application or use. This Information is intended for use only by customers who have the requisite experience and capability to determine the correct products for their application. Any technical advice inferred from this Information or otherwise provided by us with reference to the use of our products is given gratis, and we assume no obligation or liability for the advice given or results obtained.