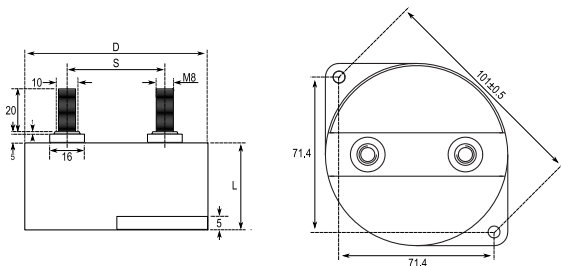


C4DE, Film, Metallized Polypropylene, DC Link, 140 uF, 10%, 800 VDC



| General Information |  |
|---------------------|--|
| Series:             | C4DE   |
| Dielectric:         | Metallized Polypropylene   |
| Style:              | Can  |
| RoHS:               | With Exemptions  |
| REACH:              | SVHC (Pb – CAS 7439-92-1)  |
| Lead:               | Threaded Studs M8  |
| AEC-Q200:           | No   |
| Miscellaneous:      | 35 Amps (10kHz, 85C).  |
| Notes:              | The max torques are: Terminals M8 male: 7 N.m / Fixing Holes of the Plastic Case: 5 N.m. |

| Dimensions |               |
|------------|---------------|
| D          | 84mm +/-0.5mm |
| L          | 64mm +/-2mm   |
| S          | 45mm +/-1mm   |
| LL         | 20mm NOM      |
| F          | 10mm NOM      |

| Specifications         |   |
|------------------------|---|
| Capacitance:           | 140 uF  |
| Capacitance Tolerance: | 10%   |
| Voltage DC:            | 800 VDC   |
| Temperature Range:     | -40/+85°C   |
| Rated Temperature:     | 85°C  |
| Max dV/dt:             | 25 V/us   |
| Resistance:            | 1.2 mOhms (10kHz)   |
| Ripple Current:        | 91 Amps (10kHz 25C), 77 Amps (10kHz 45C), 60 Amps (10kHz 65C) |
| Inductance:            | 40 nH   |

| Packaging Specifications |              |
|--------------------------|--------------|
| Mounting:                | Flange Mount |
| Packaging:               | Bulk, Bag    |
| Packaging Quantity:      | 12           |